

Youth Missions International

2009 Annual Report



Making faith active in the lives of young people while spreading the Gospel of Jesus Christ at home and around the world.

Finances

2009 Financial Breakdown

Total donations:

\$189,417.00

Income from services and sales:

\$21,493.00

Total income:

\$211,554.00

Total Spent: \$188,510.00

Outstanding Board Loan:
\$10,000.00 (-23% from '09)

To read stories about youth and churches impacted by our ministry, go to:

www.ymimissions.org

2009: Year in Review

Expansion of Our Ministry

Last year YMI experienced a leap in its growth as it expanded in its capacity to train and send mission participants. As we finished the training cycle back in 2008 we knew we had a lot to look forward to in the summer of 2009 but, as always, God brought about more than we could have hoped or dreamed for.

While we had planned to expand our mission trip sites beyond the original three countries of Brazil, Ukraine, and South Korea (which we accomplished) we did not know what the future held regarding church groups using us for training and sending their youth teams. That question was answered when CUP Church in Richland, WA elected to use YMI to send 29 adults

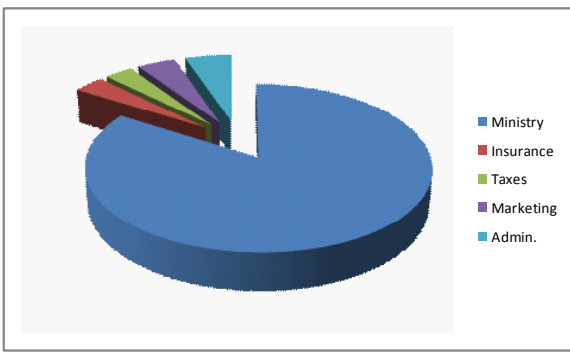
and youth to Lugansk, Ukraine last June. In working with them we found that churches definitely value our training and have a desire to utilize us to help them send well-prepared teams to the international mission field. This trend continues into 2010.



Our trips in 2009 went well, but our training cycle that began in '09 for '10 trips went even better. This last year we added training sites up and down the West Coast and even trained people in Kansas City to go on YMI Teams in 2010. In addition, the College Program doubled in size as we trained many more for trips in 2010 than the previous year.

As we look back at the growth of YMI in 2009 it causes us to also look ahead with expectation at what God has for us in 2010!

Where Your Donations Went



Percent of Budget

For every dollar donated to YMI in 2008, 91 cents went into our ministry of training and sending young people on short-term mission trips.

Ministry	84.0%
Administration	5.1%
Liability Reduction	5.0%
Marketing	4.3%
Taxes	1.6%

Because of you...

Those who donated in 2009 allowed YMI to send 7 teams in 2009 and train 10 more for 2010.

In addition to sending teams to Brazil, Ukraine, and South Korea, YMI was able to open new locations for 2010 teams in the following countries:

- Northern Ireland
- The Netherlands
- Costa Rica
- Egypt
- Zambia